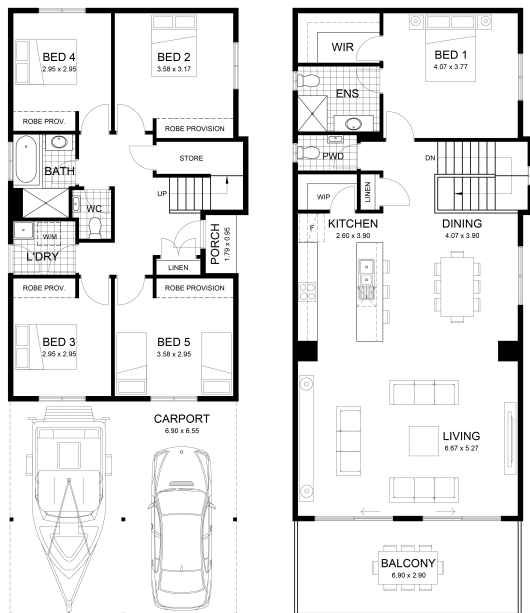


Kara 51 C - Coast & Country

5 3 2 28 sq

Facade name: Evolutional

House plan:



LOT #41

Seaside

Address: Salty Air Circuit, Emu Bay, 5223



1500 m²

House and land package price:

From **\$682,510***

About package:

Overlooking Emu Bay

Inclusions:

- Generous site costs and footings
- Quality fixtures and fittings
- Overhead cupboards to kitchen with canopy rangehood
- Stainless steel appliances
- Ducted reverse cycle air-conditioning
- Timber laminate floating floor and carpet
- Built-in robes to bedrooms
- Chrome mixer taps throughout
- Instantaneous gas hot water system
- R4.0 ceiling insulation, R2.0 external wall insulation

*refer website for terms and conditions.

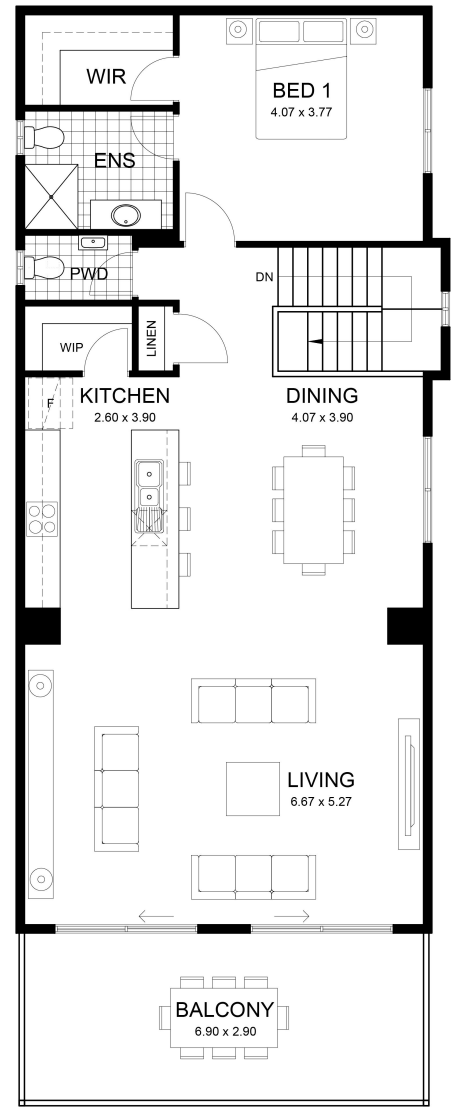
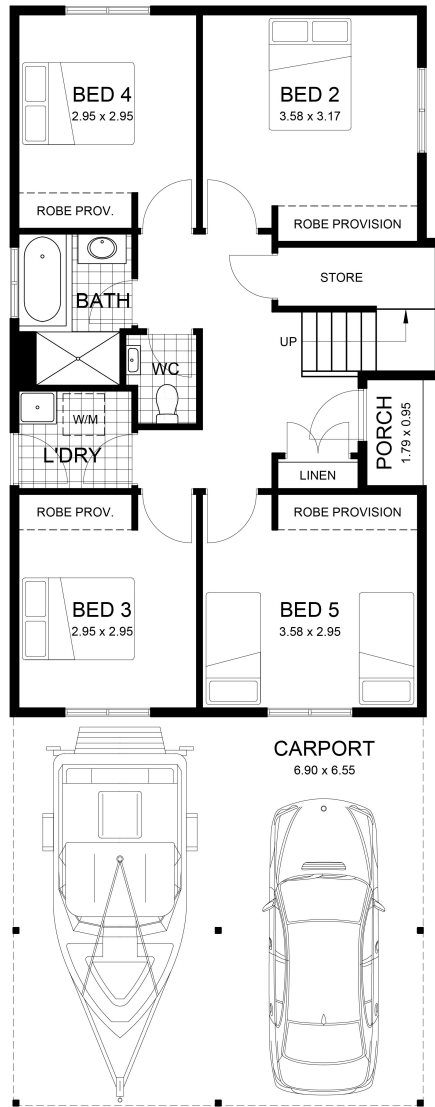
ENQUIRE NOW:

Russell Slater • P: 0429 785 109 • E: r.slater@rivergumhomes.com.au

Images depicted on this site are for illustration purposes online. Facades and other images of homes and land estates may include optional upgrades, additional fixtures, finishes and home or estate features that are not included in the base prices of the home or land package such as landscaping, feature tiling, decking, furniture, feature lighting, pools, etc. Land estate pricing and plans are subject to developer guidelines and may vary at any time.

House Features:

- ✓ 2700mm Ceiling Heights
- ✓ Canopy Rangehood
- ✓ Built-In Robes to Bedrooms
- ✓ Ducted Air Conditioning
- ✓ Overhead Cupboards to Kitchen
- ✓ Timber Laminate Flooring to Living areas & Hallways
- ✓ Carpet to Bedrooms
- ✓ Roof & Surface Stormwater
- ✓ • Upgraded 'gold range' kitchen splashback tiles to
- ✓ • Solar energy system
- ✓ • Laminex 'Silk' finish laminate
- ✓ • Residentia 600mm 9 function underbench oven -
- ✓ • Residentia 600mm glass top electric cook top - model
- ✓ • Fienza 'Koko Rimless' back to wall toilet suite
- ✓ • 75mm internal cornices throughout
- ✓ • Gainsborough premium lever handles to all internal
- ✓ • Soft closers to all Kitchen cupboard doors and drawers
- ✓ • 600mm 6 function underbench dishwasher
- ✓ • Alder chrome, black or brushed nickel tapware to
- ✓ • Gainsborough Trilock Contemporary entry set
- ✓ • Locks to all openable windows
- ✓ 10 DOWNLIGHTS
- ✓ Upgraded gas plumbing to LPG
- ✓ • Fienza 'Petra' above counter vanity basin to Bathrooms
- ✓ • Premium chrome, black or brushed nickeltapware
- ✓ • Hume premium glazed front door - Newington XN Range
- ✓ • Clipsal combination fan/light/heat unit to
- ✓ 26L INSTANTANEOUS HOT WATER UNIT
- ✓ Locks to all Windows



ENQUIRE NOW:

Russell Slater • P: 0429 785 109 • E: r.slater@rivergumhomes.com.au

Images depicted on this site are for illustration purposes online. Facades and other images of homes and land estates may include optional upgrades, additional fixtures, finishes and home or estate features that are not included in the base prices of the home or land package such as landscaping, feature tiling, decking, furniture, feature lighting, pools, etc. Land estate pricing and plans are subject to developer guidelines and may vary at any time.